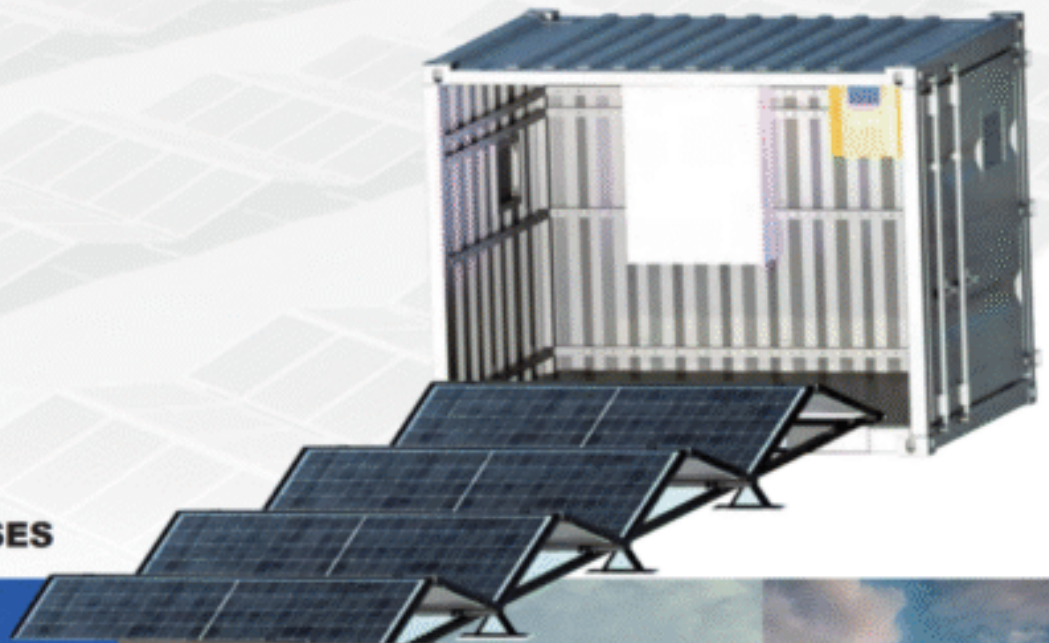


Q-SUN solar

Power BOX Series



Power SPV

Power SES



Borderland



Desert



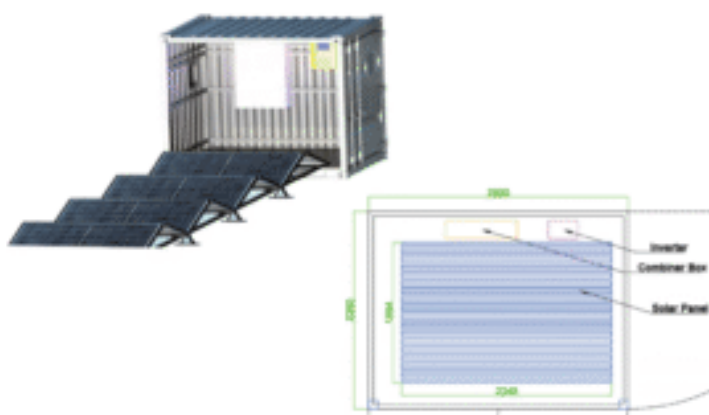
Island



Disaster Area



Construction Site



| | |
|---|----------------------|
| System Product Model | QN08GP-M-20K |
| Total Weight (Tons) | 5 |
| Type of Container | 8GPF x1 ① |
| Solar Array Capacity (Pmax / kWp) | 20.23 |
| Type of Solar Module (W) | 595x34 ② |
| String Inverter (kW) | 20x1 ③ |
| Bracket (Number of Module per Sheet) | 1x34 ④ |
| Total Unfolded Footprint (L*W*H/m) | 46*2.3(2.4)*0.6(2.2) |
| Occupied Area of Whole System (m ²) | 112.4 (46*2.43) |
| Complete Unfolding Time (mins) | 60 |
| Complete Folding Time (mins) | 50 |
| Installation Persons | 4 |

① Container

| | |
|--------------------------------|----------------|
| Type of Container | 8GPF |
| External Dimensions (L*W*H/mm) | 2900*2260*2200 |
| Container Weight (Tons) | 1.6 |
| Container Doors | Two Sides |

③ Inverter

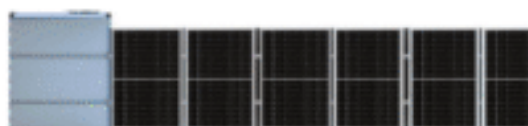
| | |
|----------------------------------|----------------------------|
| Inverter Type | On Grid |
| Inverter Capacity (kW) | 20 |
| Max. PV Power (Pmax/Wp) | 26000 |
| Nominal AC Output Power (W) | 20000 |
| Maximum AC Output Power (W) | 22000 |
| Nominal AC Voltage (V) | 3L/N/PE 220/380V, 230/400V |
| AC Grid Frequency Range (Hz) | 50/45-55, 60/55-65 |
| Maximum Output Current (A) | 33.3/51.9 |
| Dimensions (WxHxD/mm) | 362*527*220 |
| Weight (kg) | 20 |
| Operating Temperature Range (°C) | -25~60°C, >45°C derating |
| Communication | RS485/RS232/WIFI/LAN |

② Solar Panel

| | |
|---------------------------------|--------------|
| Solar Module Type | Topcon/HJT |
| Max.Power (Pmax/Wp) | 595 |
| Max. Power Voltage (Vm / V) | 44.64 |
| Max. Power Current (Im / A) | 13.33 |
| Open Circuit Voltage (Voc / V) | 52.58 |
| Short Circuit Current (Isc / A) | 13.99 |
| Product Dimensions (mm) | 2278*1134*30 |
| Weight (Kgs) | 31.8 |
| Quantity of Solar Module (pcs) | 34 |

④ Bracket

| | |
|--|--------------------|
| Material of Bracket | Carbon Steel Q235B |
| Single Bracket Dimension (LxWxD) | 2348*1204*30 |
| Angle of Unfolding Bracket (°) | ±15 (10~20) |
| Length of Unfolding Bracket (m) | 42 |
| Occupied Area of Unfolding Bracket (m ²) | 98 (17*2.45*2.35) |
| Quantity of Bracket (Page) | 34 |



Top View



Side View



Front View